

**FOR PARTICIPANTS ONLY**  
**14 March 2017**  
**ENGLISH ONLY**

**UNITED NATIONS**  
**CENTRE FOR REGIONAL DEVELOPMENT**

**In collaboration with**

**Ministry of Public Works and Transport, Lao People's Democratic Republic**  
**Ministry of the Environment (MOE), Japan**  
**Partnership on Sustainable, Low Carbon Transport**  
**United Nations Economic and Social Commission for Asia and the Pacific, and**  
**United Nations Office for Sustainable Development**

**TENTH REGIONAL ENVIRONMENTALLY SUSTAINABLE TRANSPORT (EST) FORUM IN ASIA,**  
**14-16 MARCH 2017, VIENTIANE, LAO PEOPLE'S DEMOCRATIC REPUBLIC**

## **Roles of Sustainable Access in Food Security and Eliminating Hunger**

**(Presentation for EST Plenary Session 2 the Provisional Programme)**

**Final Draft**

-----  
This presentation has been prepared by Dr. Stephen Rudgard, FAO for the Tenth Regional EST Forum in Asia. The views expressed herein are those of the author only and do not necessarily reflect the views of the United Nations.

**Disclaimer:** The designations employed and the presentation of the material in this publication do not imply the expression of any opinion whatsoever on the part of the Secretariat of the United Nations concerning the legal status of any country, territory, city or area or of its authorities, or concerning the delimitation of its frontiers or boundaries.



# *Role of Sustainable Access in Food Security and Eliminating Hunger*

**Stephen Rudgard**  
FAO Representative, Lao PDR

**Intergovernmental Tenth Regional Environmentally  
Sustainable Transport (EST) Forum in Asia  
Vientiane, 14-15 March 2017**

# The Rural Poor

---



- Worldwide, there are 2.1 billion poor people, of which 767 million still live in extreme poverty<sup>1</sup>
- 95% of rural poor live in East Asia, South Asia and sub-Saharan Africa<sup>1</sup>
- 75% live in rural areas and depend on agriculture for subsistence<sup>1</sup>
- 80% of all farms are 2ha or less<sup>2</sup>

Source: 1 World Bank, 2016  
2 FAO SOFA, 2014



# Access issues for Producers

---

- Inputs (eg. seeds, fertilizers, credit)
- Information and services (eg. market price, education, technical support)
- Market access (lack of roads, transportation means, storage and cold chain)
- River transport being threatened by dams and hydro-electric installations
- Women are less likely to have access

# Access issues for consumers

---

- Producers are also consumers
- Urban poor often lack access to healthy foods (economically and physically)
- Estimated number of slum dwellers: 863 million (2012)
- Change in lifestyle result in change in diets

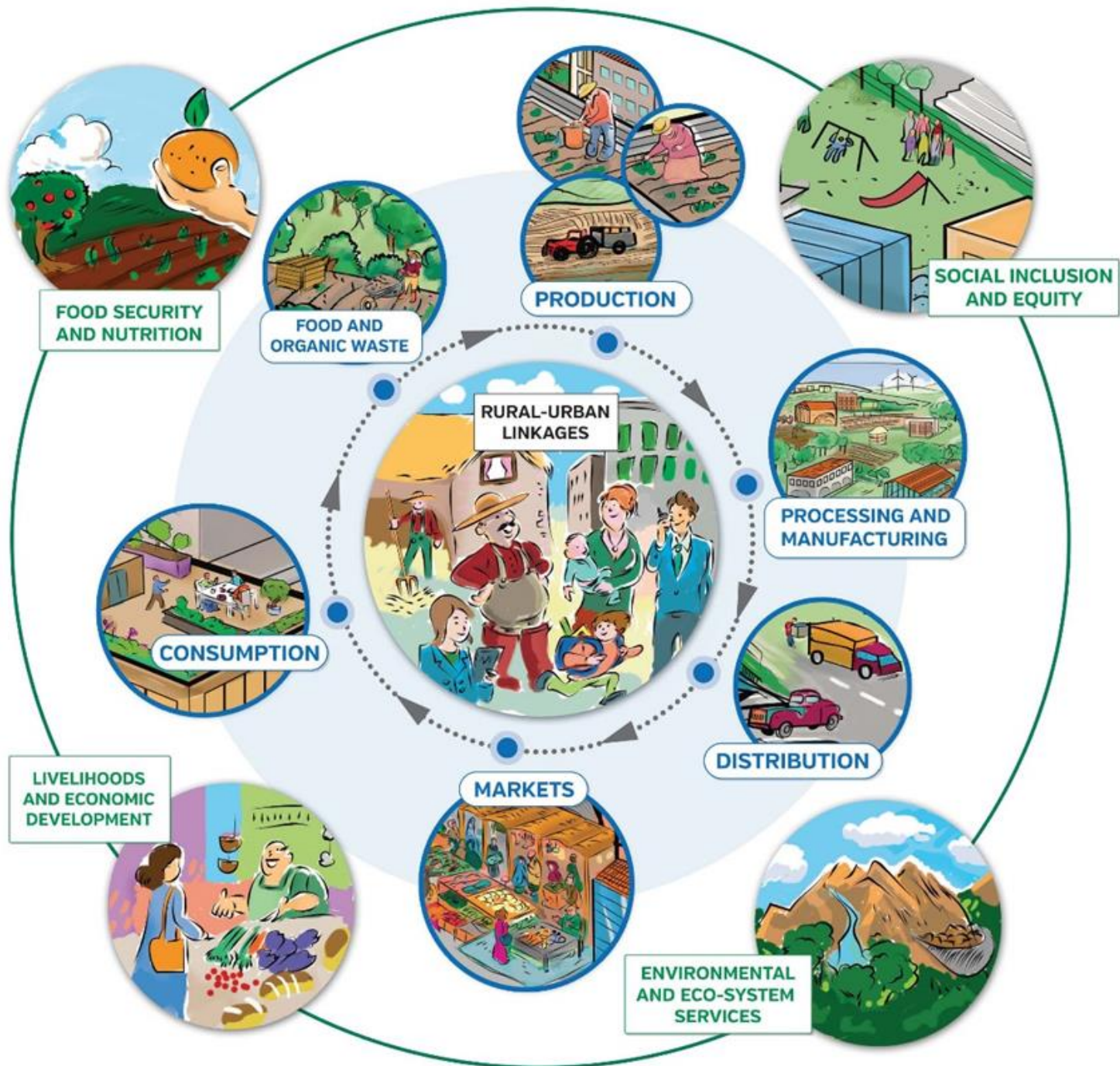


# Access issues in the Pacific



- Dependence on ocean and air transport
- Limitation of local production and access to resources





# Framework for implementation



- Governance
- Sustainable diets and nutrition
- Social and economic equity
- Food waste



- The New Urban Agenda





***Thank you for your attention!***