

**CONSERVATION OF PROTECTED AREAS NETWORK AND COMPLEMENTARY LANDSCAPES IN THE METROPOLITAN DISTRICT OF QUITO - ECUADOR**

**Cecilia PACHECO SEMPTEGUI**  
Ecosystems and Biodiversity Advisor  
Environment Secretariat

Surface: 4204 km<sup>2</sup>

Urban area: 7,6%  
Developable area: 2,4%

Undevelopable area: 90%

Population 1,8 M

**QUITO METROPOLITAN DISTRICT**

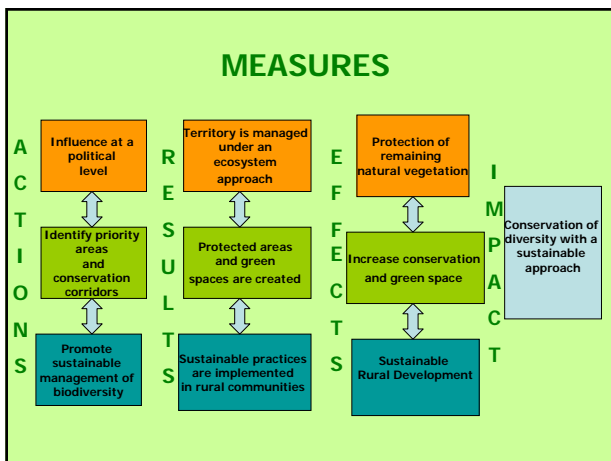
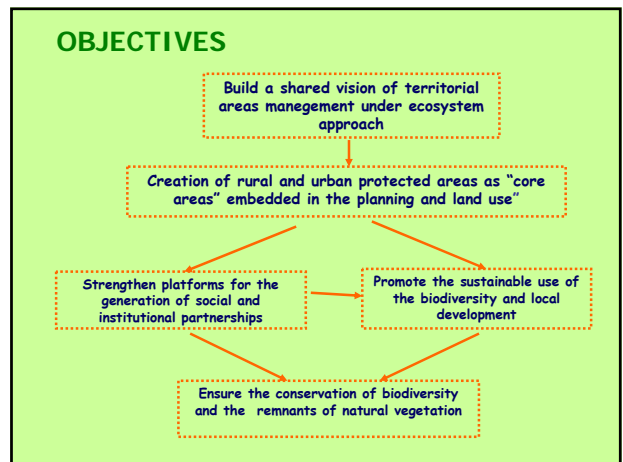
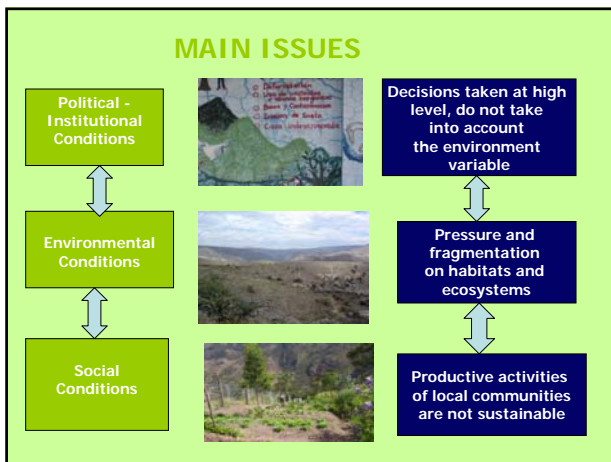
17 Ecosystems

Quito City

Variety of climates and microclimates (500 a 4800 m)

Biodiversed

Cultural Heritage of Humanity



### FUTURE IMAGE

Residents adopt sustainable practices in conservation

**Quito Green and Healthy**

Species and ecosystems are protected

Environmental goods and services for citizens and local communities